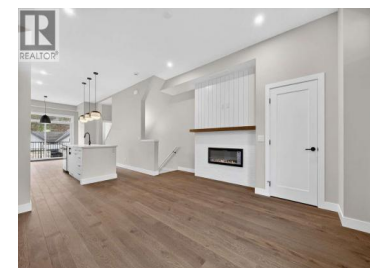




1550 Union Road 20 Kelowna British Columbia

Wilden

\$744,900



*** For more information, please click Brochure button. *** Experience refined lakeside living in this Interior Juniper townhouse at Pondsides Landing, offering 1,535 sq. ft. of contemporary comfort in the Warm Nordic colour scheme. This thoughtfully designed 3-bedroom, 3-bathroom home features a bright open-concept layout and a private rooftop patio ideal for relaxing or entertaining. The tandem two-car garage provides generous parking and storage, while the partially covered rooftop terrace showcases tranquil mountain views. Just 10 minutes from downtown Kelowna and the airport, Pondsides Landing is nestled within the vibrant Wilden community--surrounded by natural beauty, walking trails, and scenic ponds. Future area highlights include the upcoming Wilden Market Square and the new Wilden Elementary School, both only steps from your door. Enjoy parks, trail networks, and nature literally at your doorstep. GST applicable. All measurements are approximate. (id:6769)

Darya Pfund

Easy List Realty

Phone: (888) 323-1998

<http://www.easylistrealty.ca/>



RE/MAX Kelowna
100-1553 Harvey Avenue
Kelowna, BC,
Canada