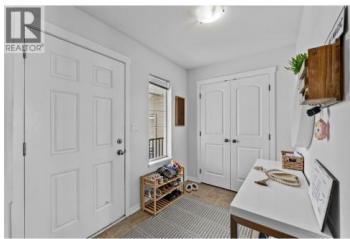




## 1900 Hugh Allan Drive 20 Kamloops British Columbia

Pineview Valley

# \$579,900



Welcome to this well-maintained family townhouse in the highly desirable Pineview neighbourhood! Offering 4 bedrooms and 3.5 bathrooms, this home provides plenty of space for growing families. The functional layout features an open-concept main floor with a bright kitchen boasting new appliances in 2026, a dining area, and a living area—perfect for everyday living and entertaining. Upstairs, you'll find 3 comfortable bedrooms, including a spacious primary suite, while the fully finished basement adds extra living space with a fourth bedroom, rec room, and full bathroom. Enjoy the convenience of being just minutes from parks, walking and biking trails, shopping, and entertainment. Pineview continues to grow, with a brand new elementary school set to open in September 2026—adding even more value to this family-friendly community. Priced below BC Assessment, this is an excellent opportunity to get into a sought-after neighbourhood. Don't miss out! (id:6769)



**Theresa Arksey**

Oakwyn Realty Ltd

Phone: (250) 574-2803



**RE/MAX Kelowna**  
100-1553 Harvey Avenue  
Kelowna, BC,  
Canada