



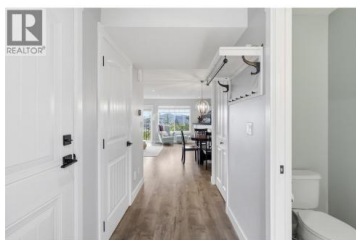
## 1990 Pacific Way 20 Kamloops British Columbia

Aberdeen

# \$559,900



Beautiful 3 bedroom 3 bathroom townhouse located at Pacific Ridge in lower Aberdeen. Spectacular city views, close proximity to major shopping, TRU, city center and highway access, all combined to make this location and this unit hard to beat! Main floor features a single car garage, updated kitchen, dining room, living room, and half bath. Upstairs includes: primary bedroom (with 5 piece ensuite), 2 spacious bedrooms, and a 4-pc bathroom. In the basement is a massive rec room with sliding doors to a patio, laundry and furnace room as well as a suspended slab room under the garage currently used as a workshop but could easily be a media room. Great strata complex with a low \$338 per month fee including water, sewer, garbage and maintenance of the common property. (id:6769)



### Richard Bates

eXp Realty (Kamloops)

Phone: (250) 682-1092

<http://www.richardbates.ca/>



RE/MAX Kelowna  
100-1553 Harvey Avenue  
Kelowna, BC,  
Canada