



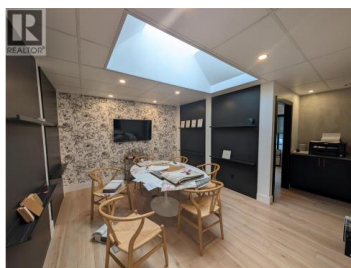
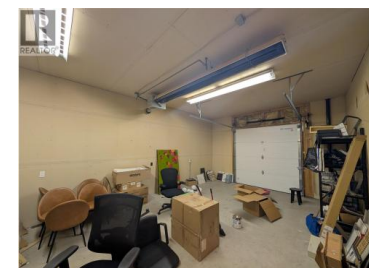
## 1751 Harvey Avenue 200 Kelowna British Columbia

Springfield/Spall

**\$21**



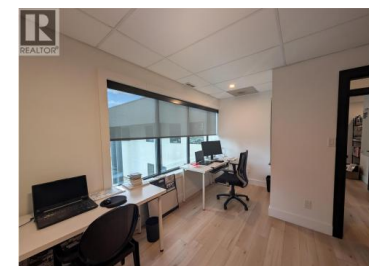
Unique opportunity to lease centrally located office space in the Landmark corridor. The second floor of this well finished 1,053 square foot unit includes 2 private offices, an open work area/boardroom, kitchenette, and bathroom. There is an overhead door at the main level which can be used for equipment storage or parking. (id:6769)



**Sol Benson**

Venture Realty Corp.

Phone: (250) 317-1077



RE/MAX Kelowna  
100-1553 Harvey Avenue  
Kelowna, BC,  
Canada