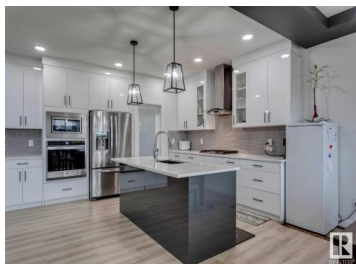




Edmonton Alberta

The Uplands

\$825,000



Welcome to the vibrant community of The Uplands! Better than new, this 2596 sqft 2-storey, w/1044 sqft LEGAL BASEMENT SUITE will surely impress! Situated on a large 5800+ sqft, fully landscaped, pie shaped lot that backs onto a greenspace. The main floor offers an open and spacious floorplan. Lavish kitchen w/premium cabinetry, quartz counters, and s.s. appliances. Gorgeous living area w/soaring 18' ceilings and linear fireplace. Open dining area, main floor bedroom, and full bath. Upstairs you will find 4 total bedrooms, including the large primary suite w/spa like 5-pc ensuite and walk-in closet. The upper level also features a bonus/loft space, additional 4-pc bath, and laundry area. The fully finished legal suite on the lower level offers a separate entrance, two bedrooms, large living/dining area, great kitchen, and laundry. Perfect for a mortgage helper! Located close to schools, parks, and other amenities. Great home in a great area! (id:6769)

Ryan R. Lauber

RE/MAX Elite

Phone: (780) 717-4861

<http://ryanlauber.com/>



RE/MAX Kelowna
100-1553 Harvey Avenue
Kelowna, BC,
Canada