

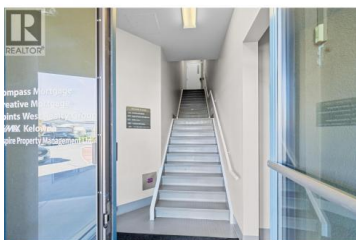
1505 Harvey Avenue 201 Kelowna British Columbia

Springfield/Spall

\$19



High exposure office space for lease in the heart of Kelowna. Prominent Highway 97 location. Second-floor strata office space offering 1238 sq. ft. of bright and functional layout. Could include #203 comprising of another 1044 sq. ft. The premises include 7 private offices and a welcoming reception space. Abundant natural light throughout with large windows in most offices. Professional office environment ideal for medical, tech, legal, or administrative use. On-site parking available for staff and clients. Located along Kelowna's main corridor, this property provides excellent exposure, accessibility, and convenience near Orchard Park Mall, shopping, dining, and public transit. (id:6769)

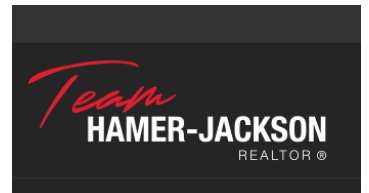


Ryan Mayne

RE/MAX Kelowna

Phone: (250) 469-4004

<http://www.pwrg.ca/>



RE/MAX Kelowna
100-1553 Harvey Avenue
Kelowna, BC,
Canada