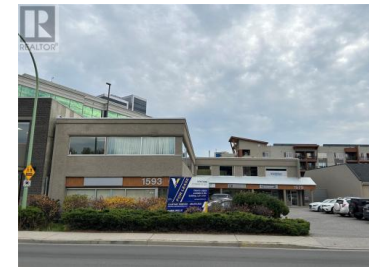


1579 Sutherland Avenue 202 Kelowna British Columbia

Springfield/Spall

\$1,260

FOR LEASE
VENTURE COMMERCIAL
There's a space available in this building. Let's chat.
COURTNEY FEDEVICH 250.576.3522
CHRIS WILLS 250.860.1371



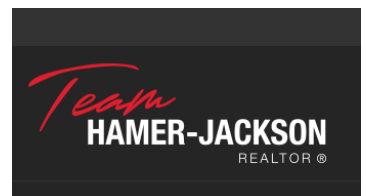
Bring your creativity to this blank slate! Unit 202 1579 Sutherland Avenue offers 504 sf of second-floor office space, located near the Landmark District with easy access on Sutherland Avenue and plenty of customer parking. Ideal for tenants looking to personalize their workspace, the landlord is open to negotiation on inducements to qualified Tenants that are looking to update the space as required. Building features walk up access and common bathrooms for visitors and employees. Suitable for businesses seeking a straightforward, practical office space in a convenient location. Lease is triple net. Gross monthly list price includes the estimated additional rent. (id:6769)

Christopher Wills

Venture Realty Corp.

Phone: (250) 870-1330

<https://venturecommercial.ca/>



RE/MAX Kelowna
100-1553 Harvey Avenue
Kelowna, BC,
Canada