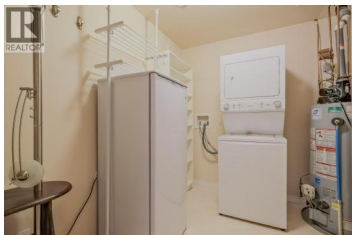




## 2255 ATKINSON Street 202 Penticton British Columbia

Main South

# \$499,900



Spacious 2-bedroom, 2-bathroom corner suite in The Kensington at the popular Cherry Lane Towers. Enjoy the peace of mind that comes with steel and concrete construction, along with an unbeatable location directly across from Cherry Lane Shopping Centre, offering convenient access to groceries, pharmacies, restaurants, and everyday amenities. This bright and generously sized home offers over 1,300 square feet of living space, plus two private decks, giving you the option of enjoying either sun or shade throughout the day. The well-designed kitchen features ample cupboard and counter space, while the spacious living room is highlighted by a cozy gas fireplace. The primary bedroom includes a walk-in closet and a full ensuite bathroom. Additional features include secure underground parking and a storage locker. Residents also enjoy access to the impressive 4,000-square-foot clubhouse, a wonderful place to gather with friends and enjoy the strong sense of community within the complex. Cherry Lane Towers is a sought-after 55+ development that permits one small pet. This particular suite enjoys an exceptionally convenient location within the building, with an exterior access door nearby for easy coming and going. Quick possession is available. (id:6769)

### Steve Thompson

Chamberlain Property Group

Phone: (250) 490-7653

<http://www.teamthompson.com/>



**RE/MAX Kelowna**  
 100-1553 Harvey Avenue  
 Kelowna, BC,  
 Canada

