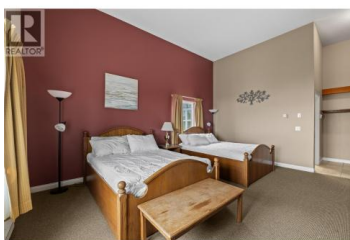
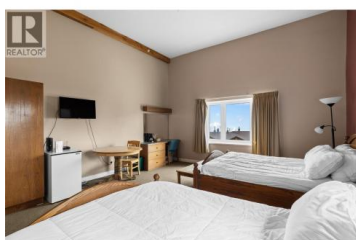
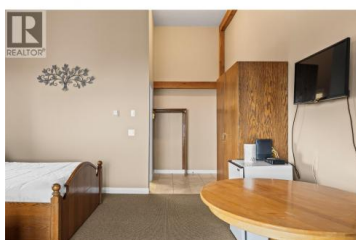
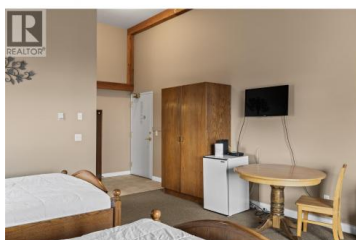




## 5275 Big White Road 202 Big White British Columbia

Big White

**\$203,900**



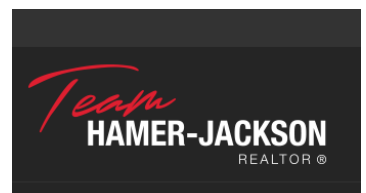
Corner Unit in the White Crystal with TRUE SKI-IN & SKI-OUT! This exceptional corner suite sits in one of Big White's most desirable locations, offering direct slope access via the Bullet Express Chair. Positioned on the view side of the building, large windows flood the space with natural light and showcase stunning vistas of the mountains and Lara's Gondola. The high ceilings add to the spacious feel, creating a warm and relaxing retreat after a day on the slopes. Enjoy full flexibility of use while benefiting from hassle-free rental management through Big White Central Reservations. The building features top-notch amenities, including a sauna, hot tub, heated underground parking, laundry facilities, and the popular Bullwheel restaurant and bar right downstairs. Located just steps from village shops, dining, and attractions—this is mountain living at its most convenient. (id:6769)

### Jesse East

RE/MAX Kelowna

Phone: (250) 862-1234

<http://www.jesseeast.com/>



RE/MAX Kelowna  
100-1553 Harvey Avenue  
Kelowna, BC,  
Canada