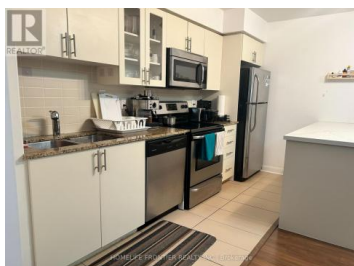
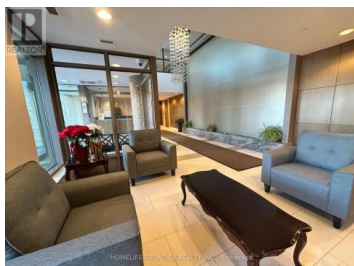




75 Norman Bethune Avenue 202 Richmond Hill Beaver Creek Business Park Ontario

Beaver Creek Business Park

\$519,000



Bright and spacious 1bdr plus Den with Parking and Locker in a welcoming condo community in Richmond Hill. Perfect open concept layout, functional kitchen with Stainless Steel appliances, tiled floors, backsplash, large island with stone countertop and breakfast bar. Laminate floors throughout, combined large dining and living rooms with walk-out to balcony. Walking distance to restaurants, entertainment and shopping. Located just minutes from HWY 7, HWY 404 & HWY 407 and public transportation. Building Amenities Include Indoor Pool, Sauna, Gym, Concierge, Guest Suite And Party Room. (id:6769)

ANAR ISMAYILOV

HOMELIFE FRONTIER REALTY INC.

Phone: (416) 218-8800

<http://www.anardreamhomes.com/>





RE/MAX Kelowna
100-1553 Harvey Avenue
Kelowna, BC,
Canada