



## 9030 Leslie Street 202 Richmond Hill Beaver Creek Business Park Ontario

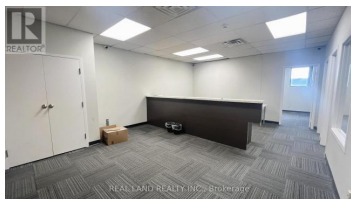
Beaver Creek Business Park

**\$2,225**

REAL LAND REALTY INC., Brokerage



Great Location At Leslie And Hwy 7 in Heart of Richmond Hill. For Professional Office Use. Property Has Free Underground Parking, Elevator And On-Site Super. Professionally Managed. Central Location In The Beaver Creek Business Park. Close To Major Highways, Great Public Transportation . Office current use for a private school, open reception, 3 private offices (id:6769)



### TOMMY HUA

REAL LAND REALTY INC.

Phone: (647) 867-7632

<http://www.tommyhua.ca/>



RE/MAX Kelowna  
100-1553 Harvey Avenue  
Kelowna, BC,  
Canada