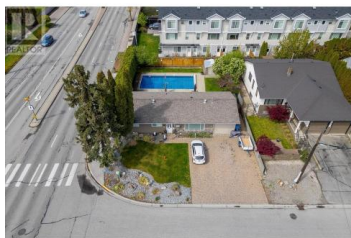
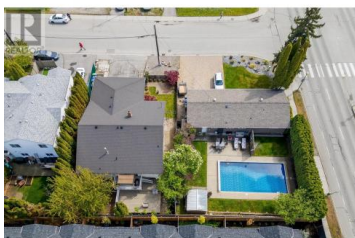


2030 Wilkinson Street Kelowna British Columbia

Springfield/Spall

\$1,199,000



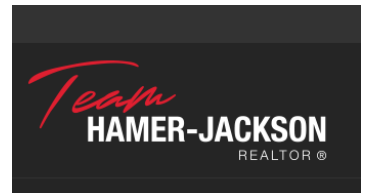
First time on MLS! This flat, 0.15Acre Lot, in the Capri Landmark Urban area is perfect for its next great use. Purchase the adjoining lot as a land assembly that is for sale at 2024 Wilinon, and have the flexibility to build the size needed for the immediate area. One side of this lot faces Springfield, offering multiple opportunities for redevelopment. Bus route out the door, and inside the sought-after UC2 core area for development. Bring your ideas! This Urban Centre Zoning, allows 4- 6 story apartments, Townhomes/apartment combo. Close proximity to all major amenities, grocery stores, schools, restaurants, Kelowna downtown, and easy access to Highway 97. Conceptual plan included for 16 units with on-grade parking* (id:6769)

Christian Kirschke

Coldwell Banker Horizon Realty

Phone: (250) 863-2000

<https://www.kelownahome.com/>



RE/MAX Kelowna
100-1553 Harvey Avenue
Kelowna, BC,
Canada