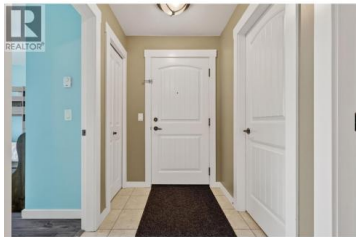




10529 Powley Court 204 Lake Country British Columbia

Lake Country East / Oyama

\$450,000



Welcome to Aspen View! This 2-bedroom, 2-bathroom corner-unit condo, perfectly situated in the heart of Lake Country. Offering the ultimate blend of convenience and comfort, this home is just minutes away from all local amenities and provides quick, easy access to UBCO - making it an ideal choice for professionals, students, or savvy investors. The primary bedroom features a spacious ensuite complete with a dual vanity! The open-concept kitchen and living area is flooded with natural light, creating a warm and inviting atmosphere and the split floorplan separates the bedrooms for maximum privacy. This unit features an oversized deck - a great bonus space that is perfect for entertaining, summer BBQs, or simply unwinding. This unit comes with two dedicated parking stalls for added security and convenience. Don't miss out on this bright, low-maintenance gem. Book your viewing today!

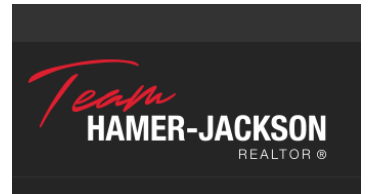
(id:6769)

Joanne Willmott

Royal LePage Kelowna

Phone: (250) 870-8788

<http://www.joannewillmott.com/>



RE/MAX Kelowna
 100-1553 Harvey Avenue
 Kelowna, BC,
 Canada