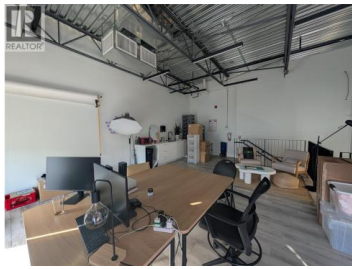
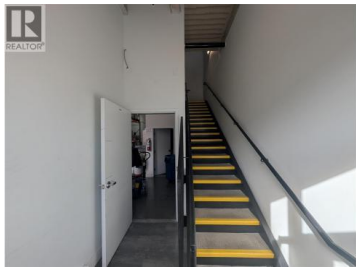


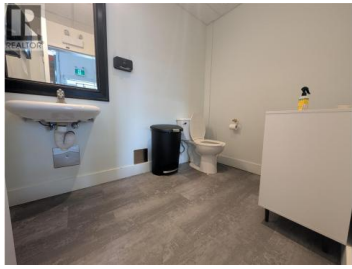
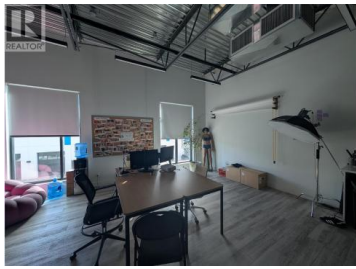
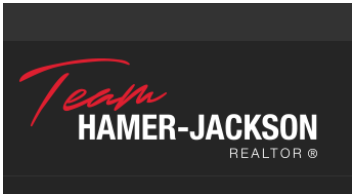
**1625 Dilworth Drive 204 Kelowna British Columbia**  
 Dilworth Mountain  
**\$22**



Opportunity to sublease a well located 2,045 sq. ft. industrial unit featuring an enclosed mezzanine and an open warehouse area with a 12' overhead door. Ideal for contractors, manufacturers and warehouse users who require space in central Kelowna. Take advantage of a short term subleasing opportunity. The head landlord may also consider a new head lease subject to review of the prospective tenant. The current lease expires June 30th, 2028. (id:6769)



**Sol Benson**  
 Venture Realty Corp.  
 Phone: (250) 317-1077



**RE/MAX Kelowna**  
 100-1553 Harvey Avenue  
 Kelowna, BC,  
 Canada