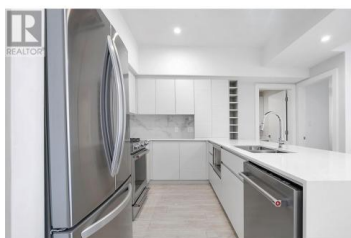


## 1925 Enterprise Way 205 Kelowna British Columbia

Springfield/Spall

**\$500,000**



Welcome to your dream home on Enterprise Way! This immaculate 2bed 2bath condo is perfect for first-time buyers, downsizers, or savvy investors seeking a prime location. The bright primary bedroom features an ensuite and WIC, while the second bedroom offers flexibility as a guest room, home office, or creative space. The open-concept living area is filled with natural light, creating a warm and inviting atmosphere. The modern kitchen boasts stainless steel appliances, sleek cabinetry, and ample counter space for cooking or entertaining. The bathroom is beautifully finished with marble-style tiles, contemporary fixtures, and plenty of storage. Enjoy the outdoors year-round on your covered balcony—perfect for morning coffee or unwinding after a long day, with views of the vibrant surroundings. The building offers excellent amenities, including a rooftop patio with 360 panoramic views, secure underground parking, and bike storage. This condo is ideally located with easy access to local amenities. For just \$50, enjoy membership access to nearby Hyatt Hotel facilities, including a pool, hot tub, and fitness center. Shopping at Orchard Plaza and Landmark Centre is just steps away, while drugstores, coffee shops, and supermarkets are within walking distance. Outdoor enthusiasts will love the proximity to parks and the Okanagan Rail Trail. Families will appreciate the nearby school...



**RE/MAX Kelowna**  
100-1553 Harvey Avenue  
Kelowna, BC,  
Canada

### Mathieu Bedard

eXp Realty (Kelowna)

Phone: (250) 801-9700

<http://www.searchkelownaproperties.com/>

