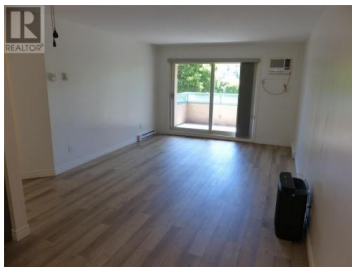




8700 Jubilee Road 205 Summerland British Columbia

Main Town

\$370,000



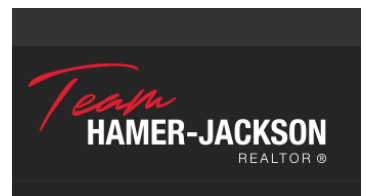
Updated 2 bedroom 2 bathroom South facing second-floor unit! This unit is move-in ready! Bathrooms, kitchen cabinets, flooring, light fixtures, washer, dryer, fridge, and paint have all been recently updated! Enjoy the southern view towards Summerland's Giants Head Mountain from your private deck. Linden Terraces is a 55+ complex, that allows one pet (one cat or one dog), and BBQ's. This unit also features 1 carport-covered parking space and a large storage unit, and there is RV parking for rent when available. Located within walking distance of Summerland's downtown where you will find our quaint shops and restaurants. Book your viewing today. (id:6769)



Wes Burdick

RE/MAX Orchard Country

Phone: (250) 809-9025



RE/MAX Kelowna
100-1553 Harvey Avenue
Kelowna, BC,
Canada