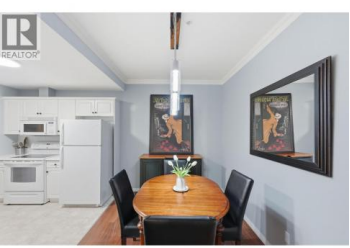
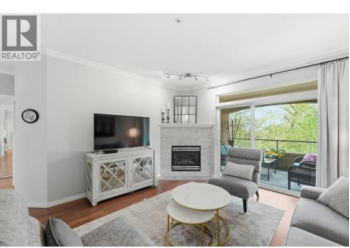
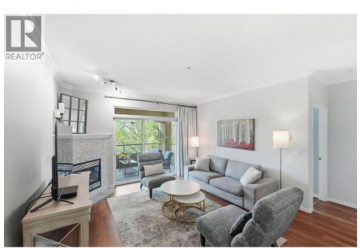




1960 Enterprise Way 206 Kelowna British Columbia
 Dilworth Mountain
\$475,000



Welcome to this spacious 2-bedroom, 2-bathroom condo offering comfort, convenience, and a vibrant lifestyle. Perfectly suited for those seeking easy, low-maintenance living in a well-managed and friendly community. Meadowbrook Estates features beautifully landscaped grounds and a great social atmosphere with excellent amenities. The kitchen features crisp white cabinetry, a newer dishwasher, and updated plumbing fixtures, with a convenient pass-through to the living room that enhances both light and functionality. Laminate flooring flows throughout the main living areas, complemented by 9 ft ceilings, crown moldings, an updated fireplace façade, and a newer chandelier for a polished feel. The well-designed split-bedroom layout provides privacy, while the covered balcony overlooks a peaceful treed creek. Additional comforts include air conditioning and in-suite laundry. Residents enjoy access to an outdoor pool, clubhouse, exercise room, and guest suite. Pet-friendly with restrictions, this home is ideal for downsizers, professionals, or first-time buyers. Conveniently located within walking distance to shops, restaurants, medical services, and transit. Includes 1 secure underground parking stall and 1 storage locker. **THIS ONE IS AVAILABLE AND EASY TO SHOW!** (id:6769)



RE/MAX Kelowna
 100-1553 Harvey Avenue
 Kelowna, BC,
 Canada

Kevin Chepil
 2 Percent Realty Interior Inc.
 Phone: (250) 212-0629
<https://www.kevinchepil.ca/team>

