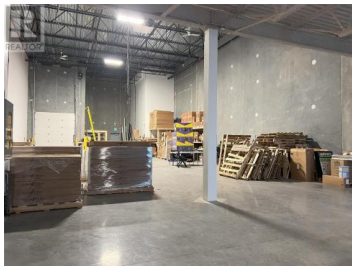
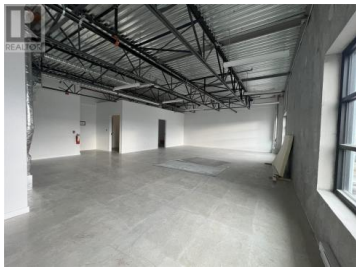




2646 Kyle Road 206 West Kelowna British Columbia
 Westbank Centre
\$20



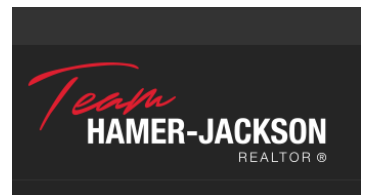
ts 205, 206 and 207 are now available to lease as one, two or three assembled leasable spaces. Each unit has its own mezzanine and 5 dedicated parking stalls, as well as ample additional space in the rear of the building. The construction of the second story of all units is steel with a polished concrete floor. Each unit has a clear ceiling height of 24ft. All units have grade level motorized loading doors at 10'w x 12'h. All units are also equipped with their own individual accessible washrooms, gas heaters for the large warehouse spaces including digital thermostats and 2 large electric ceiling fans. Each unit is equipped with a 3 phase 200 amp service that is individually metered. The lighting is high efficiency LED occupancy sensors. Each unit has been roughed-in with framing, plumbing and electrical to allow for indoor/vertical growers. Rough-ins can be removed and Landlord can provide open warehouse space if desired by Tenant. Building is "AS-NEW". (id:6769)

Shaun Greenaway

Angell Hasman & Associates Realty Ltd.

Phone: (604) 902-3888

<http://www.shaungreenaway.com/>



RE/MAX Kelowna
 100-1553 Harvey Avenue
 Kelowna, BC,
 Canada