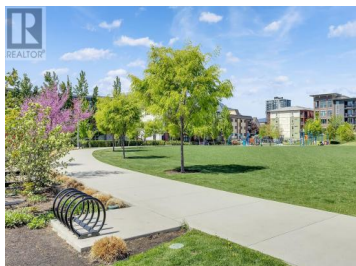
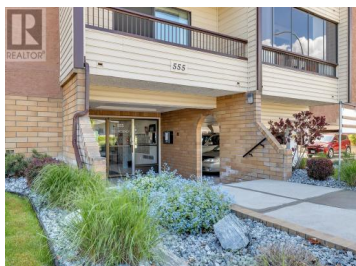


555 Rowcliffe Avenue 206 Kelowna British Columbia

Kelowna South

\$255,000



Welcome to The Regency, where the best of Kelowna living is right at your doorstep! Nestled next to the tranquil Rowcliffe Park and community garden, this age 55+ condo complex offers a peaceful retreat just moments from the beach, lake, downtown, and all the amenities you could need. Step inside this spacious 2 bedroom, 2 bathroom condo with 1,033 sq. ft. of living space, and let your imagination run wild! The primary bedroom is a generous 173 sq. ft., offering plenty of room to create your personal haven. The living room boasts a cozy, open layout perfect for relaxation, while the bright enclosed sunroom invites you to enjoy your morning coffee or afternoon reading session, rain or shine. Storage is no issue here, with ample closet space throughout. Strata fees cover water and sewer, making life that much simpler. Whether you're looking to downsize, enjoy a peaceful community, or find a condo you can truly make your own, this blank canvas is ready and waiting for your ideas. Don't miss out on this perfect opportunity to enjoy a low-maintenance lifestyle in one of Kelowna's most convenient locations! Call today to schedule your private viewing! (id:6769)

Kent Armstrong

RE/MAX Kelowna

Phone: (250) 862-7291

<http://www.kentarmstrong.ca/>



RE/MAX Kelowna
100-1553 Harvey Avenue
Kelowna, BC,
Canada

