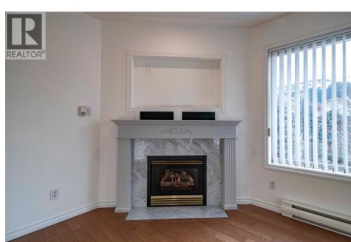


8412 Jubilee Road 207 Summerland British Columbia

Main Town

\$425,000



Spacious corner condo with bright southwest view at Silver Birch, a four-building complex that's an easy walk to downtown Summerland. Located in the Tamarack, which is right beside the Silver Birch clubhouse and outdoor swimming pool, this updated and freshly painted condo has two bedrooms and a large glassed-in patio off the living room that makes an ideal den. Updated kitchen with stainless-steel appliances. Gas fireplace in the living room, laundry room has extra storage space. Separate storage locker down the corridor. Secure underground parking (stall #5, just by the garage door), limited RV parking. Amenity centre with outdoor pool is shared by all four buildings. Quick access down the hall from this unit. 55+, one cat or one dog (maximum 14" at shoulders), no smoking. (id:6769)

Jaclyn Kinrade

Royal LePage Locations West

Phone: (250) 488-1900

<http://www.livingintheokanagan.com>

/



RE/MAX Kelowna
100-1553 Harvey Avenue
Kelowna, BC,
Canada