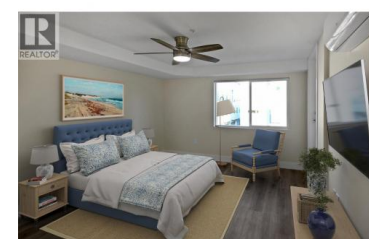




217 Elm Avenue 209 Penticton British Columbia

Main South

\$475,000



Adventure Awaits, Just 50 Steps to Skaha Lake! Welcome to South Okanagan living in this brand-new, never-lived-in 2-bed, 2-bath condo at Clarence House. Perfectly positioned on the sought-after northwest side, this 1,259 sq. ft. home blends modern style with everyday comfort. Inside, you'll find quartz countertops, luxury plank flooring, tiled bathrooms, and a spa-inspired ensuite with a walk-in shower. The open-concept kitchen shines with stainless steel appliances and custom window coverings, while an upgraded HVAC + ERV system keeps the air fresh and the temperature just right, year-round. But the real magic? Adventure and relaxation just across the street. Start your mornings with coffee by the beach, paddle out on the lake, or explore nearby parks--your lifestyle upgrade is truly steps away. This move-in-ready home comes with reasonable pet restrictions and, best of all, Sellers will pay GST. Don't miss your chance to own new construction in one of Penticton's most desirable neighborhoods, where every day feels like a vacation. (id:6769)

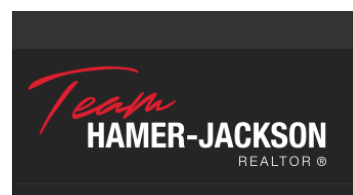
Heather Smith

RE/MAX Penticton Realty

Phone: (250) 486-7126

<http://www.realestateinpenticton.org>

/



RE/MAX Kelowna
100-1553 Harvey Avenue
Kelowna, BC,
Canada