

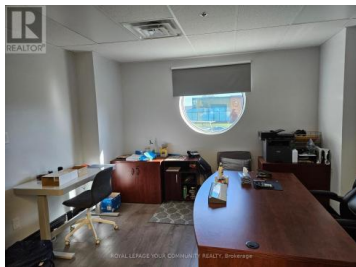


95 West Beaver Creek Road 20A Richmond Hill Beaver Creek Business Park Ontario

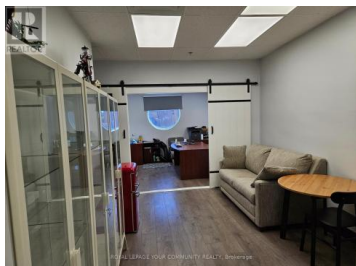
Beaver Creek Business Park

\$1,475

ROYAL LEPAGE YOUR COMMUNITY REALTY, Brokerage



A1 Location, HWY7/407/404, Ampel Parking spots, Separate Entrance , 2 Offices , 1 Kitchen , 1 Powder room. Included : Water , Heat , Common elements , Taxes. Tenant pays Hydro as per Unit SQt, Alarm System usage included. All furniture excluded. (id:6769)

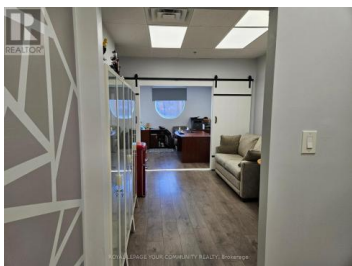
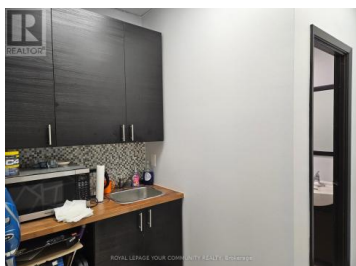
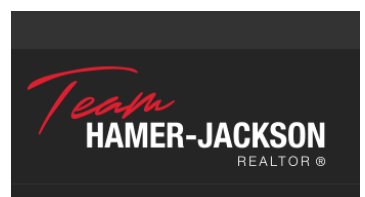


GABRIELE FISCHER

ROYAL LEPAGE YOUR COMMUNITY REALTY

Phone: (416) 627-4482

<http://www.gabrielefischerrichmondhill.com/>



RE/MAX Kelowna
100-1553 Harvey Avenue
Kelowna, BC,
Canada