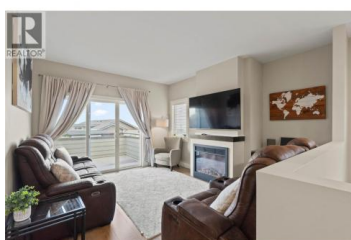




2200 Linfield Drive 21 Kamloops British Columbia

Aberdeen

\$670,000



Welcome to 21-2200 Linfield Drive! This Aberdeen half-duplex is in one of the most sought-after neighborhoods and sits in a popular low cost bare land strata. It offers a large, fully fenced yard—perfect for outdoor living. Step inside to a spacious entryway with a bedroom or office on the main level. Upstairs, enjoy an open floor plan with soaring ceilings in the dining area, laminate floors, and plenty of windows for natural light. The kitchen features quartz countertops, stainless steel appliances with new Fridge, Dishwasher and Washer and Dryer, plus easy access to the backyard. The living room includes an electric fireplace and opens to a front patio with hillside and valley view. The backyard is fully landscaped with irrigation and has lots of space for kids, pets, and entertaining. The lower level offers tons of extra storage, a rough-in for a 3-piece bathroom, and can be converted back to a two-car garage if needed. Additional features include a single garage, extra parking strata approved parking spot added, 3 spots total, central A/C, and side access to the yard. Located close to top schools, parks, and all amenities—this home checks all the boxes. Don't miss your chance to own in one of Kamloops' best neighborhoods. Book your showing today! (id:6769)

Brice Ernst

eXp Realty (Kamloops)

Phone: (250) 214-9944



RE/MAX Kelowna
 100-1553 Harvey Avenue
 Kelowna, BC,
 Canada

