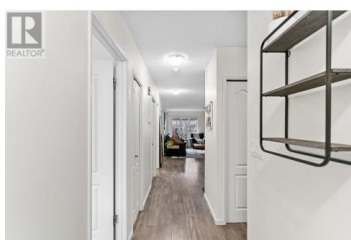




1870 Parkinson Way 210 Kelowna British Columbia

Glenmore

\$449,500



Welcome home to this thoughtfully designed top floor 2 bedroom + 2 bathroom townhome, offering both comfort and convenience. The king sized master bedroom boasts a 3-piece en-suite and a walk-in closet for all your storage needs. The spacious, inviting living room features a cozy gas fireplace and a large window, creating a warm and cheerful atmosphere. The second bedroom overlooks the deck with large windows giving it lots of natural light and making it a versatile space for a spare bedroom or home office space. Step outside to your private 12x10 covered deck, complete with durable composite deck tiles--perfect for relaxing or entertaining year-round. The bright kitchen provides plenty of cupboard and counter space, while the in-unit laundry adds extra convenience. Located just steps from the Parkinson Recreation Centre, you'll have easy access to a pool, tennis courts, park, soccer fields, and the Apple Bowl. This is central living at its finest with the railtrail minutes from your front door providing easy walking and biking access to downtown Kelowna and surrounding beaches. This complex allows 2 small pets and has 1 designated parking space with additional on-street parking. (id:6769)

Amanda Cormier

Royal LePage Kelowna

Phone: (250) 878-2444

<http://www.pointrealestategroup.com/>



RE/MAX Kelowna
100-1553 Harvey Avenue
Kelowna, BC,
Canada

