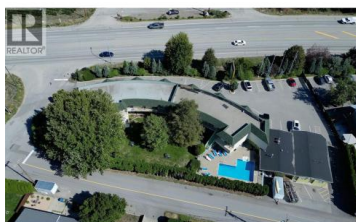




## 2107 Tait Street Summerland British Columbia

Trout Creek

**\$3,250,000**



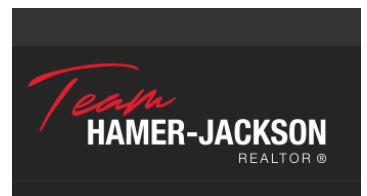
Being offered is a well-established 31-unit motel located in the Okanagan Valley. The Summerland Motel includes 31 units, with 9 units featuring kitchen facilities, and is situated along Highway 97 in the Trout Creek area just south of Summerland. The property offers a beautiful courtyard with a swimming pool and is close to nearby beaches, wineries, orchards, and golf. Current owners are nearing retirement and are ready to sell. This property maybe an ideal candidate for a franchise. Smaller Motel opportunities in the Okanagan are limited, making this a rare offering. Call your agent! (id:6769)

**Larry Berisoff**

RE/MAX Kelowna

Phone: (250) 878-7417

<http://www.bccommercialgroup.ca/>



RE/MAX Kelowna  
100-1553 Harvey Avenue  
Kelowna, BC,  
Canada