



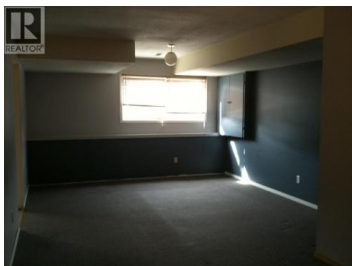
2110/2112 Ethel Street Kelowna British Columbia

Kelowna South

\$1,449,900



A full duplex investment property located within walking distance to downtown and all amenities. It has solid cash flow to assist in carrying the property for future development or as an income property. It's a non-conforming strata so no fees or rules and regs. (id:6769)

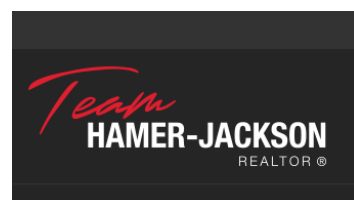


Eric Steinbach

Stilhavn Real Estate Services

Phone: (250) 718-8677

<http://www.realestatecrew.ca/>



RE/MAX Kelowna
100-1553 Harvey Avenue
Kelowna, BC,
Canada