



2119-2125 Rutland Court Kelowna British Columbia

Rutland North

\$2,999,000



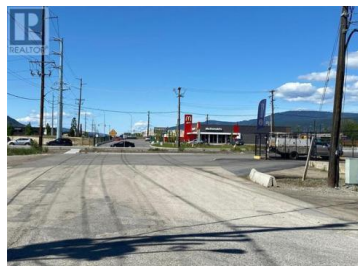
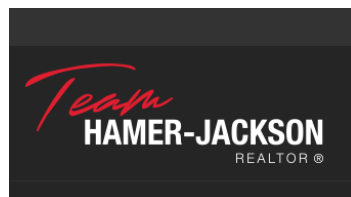
Opportunity knocks with this strategically located and rectangular shaped. 0.66 acre (28,749 SF) Land Assembly at Reid's corner. The property is zoned I2 (industrial), designated for General Industrial Use. With easy access to Highway 97, 5 mins to International Airport. The site has potential to build a 3 Storey industrial project with 30,000 SF buildable. The conceptual design given in the listing could be modified based on usage. (id:6769)



Gary Judge

RealtyMonX

Phone: (250) 899-3101



RE/MAX Kelowna
100-1553 Harvey Avenue
Kelowna, BC,
Canada