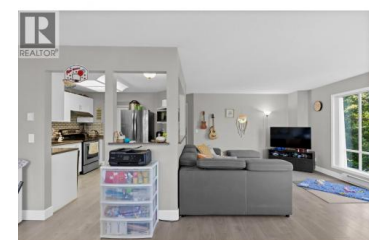




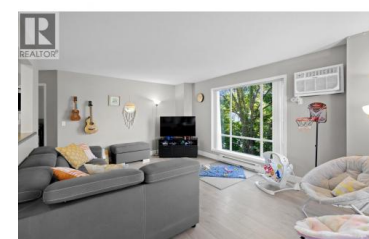
**727 Houghton Road 212 Kelowna British Columbia**

Rutland North

**\$415,000**



This bright corner-unit condo is ideally located close to shopping, transit, and Ben Lee Park. An abundance of windows fills the home with natural light, creating a spacious, single-family-home feel. Conveniently situated one level above the main floor and close to the stairs, elevator use is optional. Secure parking and a large storage locker are included. (id:6769)



**Blake Roberts**

eXp Realty (Kelowna)

Phone: (250) 212-2888

<http://www.97wayhome.com/>



**RE/MAX Kelowna**  
100-1553 Harvey Avenue  
Kelowna, BC,  
Canada