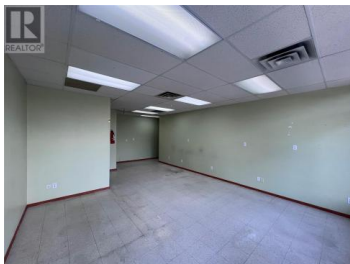
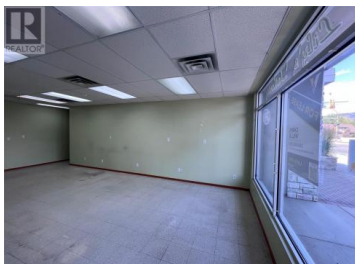




2121 Ethel Street Kelowna British Columbia

Kelowna South

\$1,400



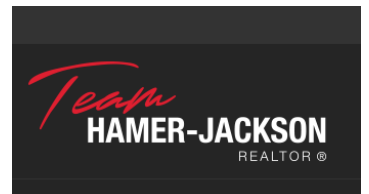
Excellent street front retail opportunity consisting of approx. 456 sf at Shaughnessy Corner, located on the corner of Springfield Road and Ethel Street in the heart of Kelowna. This versatile unit offers an open retail concept, in-suite washroom and storage area. Property features approx. 11 on site parking stalls in the rear for customers. Join Inspire Hair Studio, Aesthetics by Elizabeth, MLA Regional Office and Edward Jones. Monthly rent quoted but will be a NNN Lease. Available immediately. Contact listing agent for more information or to arrange a tour. (id:6769)

Christopher Wills

Venture Realty Corp.

Phone: (250) 870-1330

<https://venturecommercial.ca/>



RE/MAX Kelowna
100-1553 Harvey Avenue
Kelowna, BC,
Canada