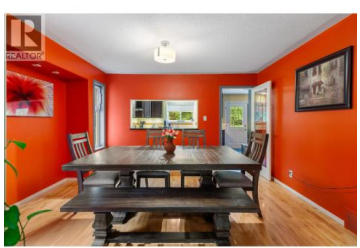
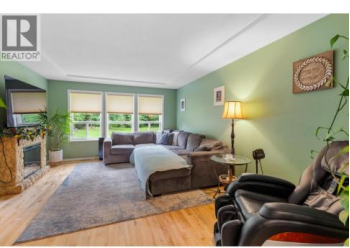




2125 SHARELENE Drive Prince George British Columbia
\$829,900



Here is this beautiful 3700 sq foot home on 4 acres in popular Miworth. Perfect for family living, the main floor boasts a generous kitchen with a nook, formal dining space, spacious living room, adjacent family room & a bedroom. Upstairs features 3 large bedrooms with the primary bedroom having a 4 pc ensuite & a walk in closet. The basement has a spacious recreation room, games area, dedicated workshop & its own private entrance. Completing the package is a true triple car garage & an expansive full-length deck that provides the ideal setting for summer entertaining, outdoor dining or simply relaxing & taking in the peaceful surroundings. Lot size measurement is taken from tax assessment & all measurements are approximate & to be verified by buyer if deemed important. (id:6769)

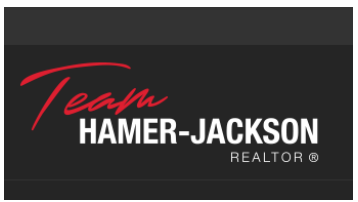


Denise Dykes

Royal LePage Aspire Realty

Phone: (250) 564-4488

<http://www.princegeorgealestateandforeclosures.com/>



RE/MAX Kelowna
 100-1553 Harvey Avenue
 Kelowna, BC,
 Canada