

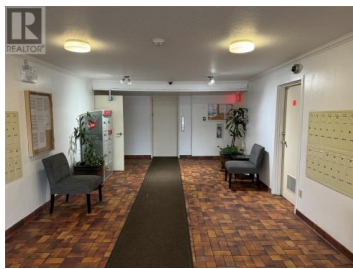
150 SKAHA Place 213 Penticton British Columbia

Main South

\$279,900



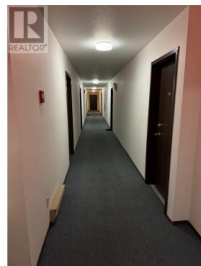
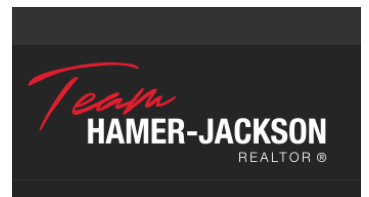
Walking distance to Skaha Lake, this charming two-bedroom condominium features a modern kitchen equipped with stainless steel appliances, this condo is ideally positioned on the southwest corner of the building, offering scenic views of the Oxbow. With a manageable down payment, your mortgage payments could be more affordable than renting a comparable two-bedroom condo in Penticton! Currently rented out for \$1400.00. Tenant is willing to stay. All measurements are approx. Buyer to verify (id:6769)



JB Bansoota

RE/MAX Wine Capital Realty

Phone: (250) 486-6339



RE/MAX Kelowna
100-1553 Harvey Avenue
Kelowna, BC,
Canada