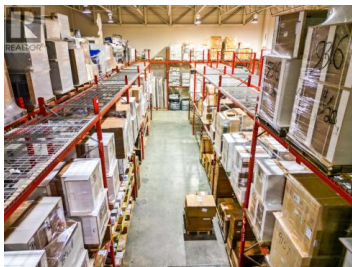
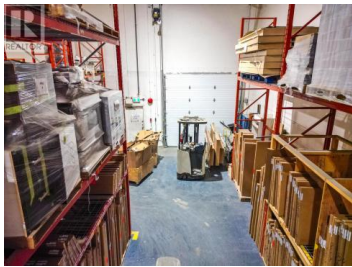


**2130 Leckie Place Kelowna British Columbia**  
 Dilworth Mountain  
**\$8**



Opportunity to sublease +/- 12,000 sq.ft. of storage area, centrally located in Kelowna. 2130 Leckie Place offers open, temperature controlled warehouse space with multiple dock and grade loading bays. Plenty of room for vertical storage with 28' ceiling heights. Note, that there is no access to washrooms, the space is only designated for storage. Sublandord open to different size options. This is a sublease until Aug 31 2027. (id:6769)

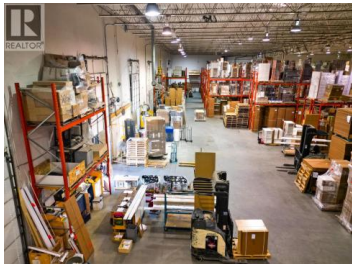
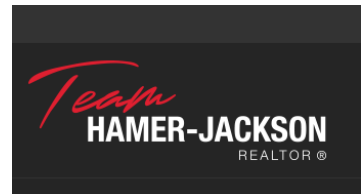


**Jason Wills**

Venture Realty Corp.

Phone: (250) 300-5477

<http://www.venturecommercial.ca/>



RE/MAX Kelowna  
 100-1553 Harvey Avenue  
 Kelowna, BC,  
 Canada