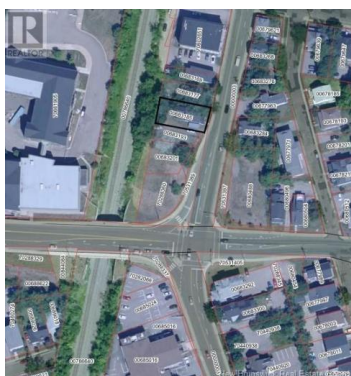




**Moncton New Brunswick**

**\$198,900**



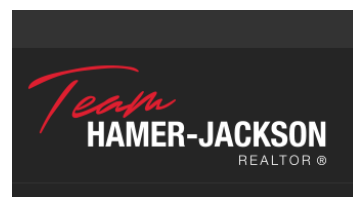
ARE YOU READY TO INVEST IN YOUR NEXT DEVELOPMENT PROJECT? 214 Botsford is a prime commercial property with endless possibilities. Whether you are looking to create a retail, office, or hospitality space, this land offers the perfect location to bring your vision to life. It's the perfect location for your next business in the heart of Moncton's vibrant downtown. Schedule a viewing today! (id:6769)

**Tabitha Hogan**

RE/MAX Quality Real Estate Inc.

Phone: (506) 886-9334

<https://tabithahogan.remaxqualityrealestate.com/>





**RE/MAX Kelowna**  
100-1553 Harvey Avenue  
Kelowna, BC,  
Canada