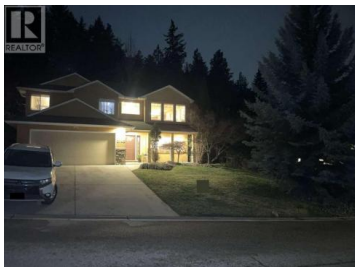




**2145 Chilcotin Crescent Kelowna British Columbia**  
 Dilworth Mountain  
**\$1,299,000**



\*\*\* For more information, please click Brochure button. \*\*\* Nestled in the sought-after Dilworth Mountain community--one of Kelowna's most desirable and coveted neighborhoods. Set on a large, private lot and backing onto protected greenspace, this home offers a tranquil forest setting with unmatched privacy and direct access to nature right from your backyard. Designed with both comfort and entertaining in mind, the bright main floor features an open-concept layout filled with natural light. The spacious kitchen is the heart of the home, complete with a large island, pullout cabinetry and ample counter space. The inviting living room is anchored by a cozy gas fireplace, creating the perfect space to gather with family and friends. The primary suite is a peaceful retreat, offering a walk-in closet, a beautifully appointed 4-piece ensuite with both tub and shower, and serene backyard views--all in heavenly quiet surroundings. With 5 bedrooms, 3 bathrooms, and a dedicated office, this home offers a comfortable family layout with room for everyone. The walkout basement is currently set up for a home-based business, adding flexibility and opportunity. Step outside to an expansive, tiered backyard designed for both play and relaxation. Kids will love the private yard featuring a zipline, treehouse, large swing, rope swing, gymnastic rings, gymnastics bar, trampoline, and slacklin...



**RE/MAX Kelowna**  
 100-1553 Harvey Avenue  
 Kelowna, BC,  
 Canada

**Darya Pfund**  
 Easy List Realty  
 Phone: (888) 323-1998  
<http://www.easylistrealty.ca/>

