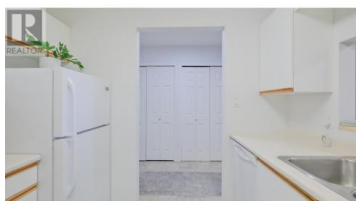
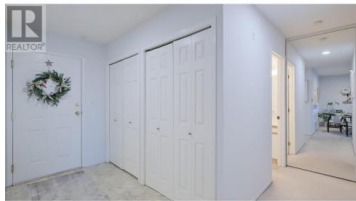


400 Sutton Crescent 215 Kelowna British Columbia

North Glenmore

\$339,900



Discover this desirable south-facing condo in the highly sought-after Glenmore neighborhood! This spacious 1-bedroom, 1-bathroom unit offers a comfortable layout perfect for singles or couples. Located in a well-managed strata with reasonable fees that include hot water, this home provides excellent value. Enjoy the convenience of being within walking distance to parks, grocery stores, restaurants, coffee shops, and medical offices, with a short drive to the university or downtown. Pet-friendly policy allows for one cat or one dog of any size (excluding vicious breeds), making it an ideal choice for pet lovers. (id:6769)

Darryl Reuter

Royal LePage Kelowna

Phone: (250) 869-2889

<http://www.reuterrealestate.com/>



RE/MAX Kelowna
100-1553 Harvey Avenue
Kelowna, BC,
Canada