



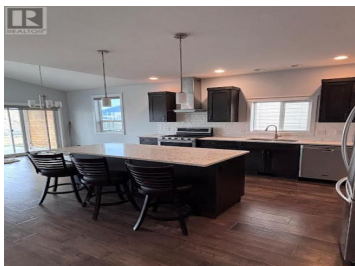
2158 DOUBLETREE Crescent Kamloops British Columbia

Batchelor Heights

\$888,000



Discover unparalleled living in this desirable rancher home with a walk-out basement, graced with sweeping views of the North Thompson Valley from the living room, main bedroom, and lower floor living areas. Revel in stunning vistas from dawn to dusk, visible from the large windows on the main floor that invite an abundance of natural sunlight. Enjoy a bright and open kitchen space, complete with a spacious island and elegant stone countertops—perfect for cooking and entertaining. Wake up to gorgeous views in the main bedroom, featuring a walk-in closet and a 4-piece ensuite bathroom. The main floor also hosts two additional bedrooms, a convenient laundry area, and a second bathroom, ideal for family living. The lower floor offers versatile living with an additional kitchen, laundry, a full bathroom, and a large great room—along with two separate entrances providing ultimate functionality. Benefit from an easy-maintenance yard and a double garage that offers ample parking, with simple access to the backyard from both sides of the property. This home combines comfort and style with unparalleled views and practical amenities. Don't miss the chance to experience this exceptional property! Schedule a viewing today. All measurements are approximate (id:6769)



Lori Godin

Royal LePage Westwin Realty

Phone: (250) 319-5698



RE/MAX Kelowna
100-1553 Harvey Avenue
Kelowna, BC,
Canada

