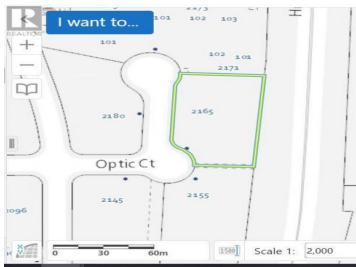
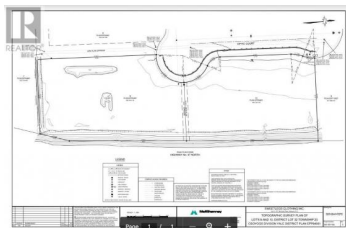




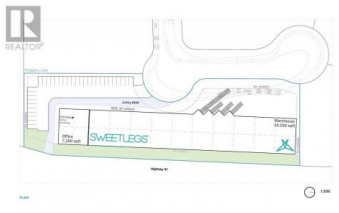
2165 Optic Court Kelowna British Columbia

University District

\$2,800,000



2.0 Option B - The Long Warehouse



Welcome to the Airport district of Kelowna, British Columbia, home of a rare and unique .988 acre lot (3998 Sq.m) with Highway Exposure that is the first thing you see when entering the city. This lot has an I2 Zoning that allows for a buildable FAR of 1.5. On top of that, the zoning allows for a building to be as tall as approximately 55 feet high. This amazing lot is the perfect opportunity to capitalize on the growing Okanagan economy. The lot has all necessary utilities and amenities are nearby, making it an ideal spot for a business or investment. With the potential for a large building with highway exposure, this lot is an opportunity that cannot be passed up. Whether you are looking to start a business or invest in the growing Okanagan economy, this location is the perfect place to do so!!! All designs were done for seller's desired needs. This is one of the last remaining lots in the airport district Call realtor for more info. (id:6769)

Francis Braam

Royal LePage Kelowna

Phone: (250) 860-1100



RE/MAX Kelowna
100-1553 Harvey Avenue
Kelowna, BC,
Canada