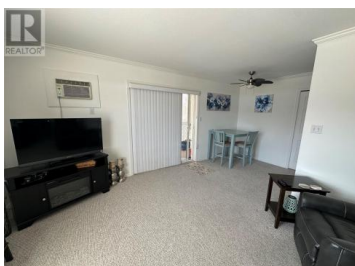
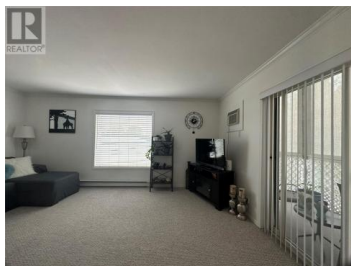




**650 MCKINNEY Road 217 Oliver British Columbia**

Oliver

**\$174,900**



Bright, second floor corner unit in Elmtree Villas with mountain views from the living room and master bedroom. This unit offers an open floorplan, 721 sqft, 1 bedroom, 1 bathroom, galley style kitchen, crown moulding, plenty of storage, west facing deck with privacy screens, 2 air conditioners, an extra large storage locker and a designated parking spot below your deck. Updates include new paint throughout the unit, new stacked washer/dryer, blinds and newer appliances. Convenient location across from the arena, Community Centre, recreation fields and Hospital. Elm Tree offers secure entry, an elevator, rec room, affordable strata fees and a small pet is welcome. (id:6769)

**Heather Andrews**

Royal LePage South Country

Phone: (250) 485-7617



**RE/MAX Kelowna**  
100-1553 Harvey Avenue  
Kelowna, BC,  
Canada