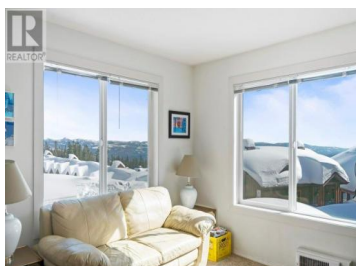
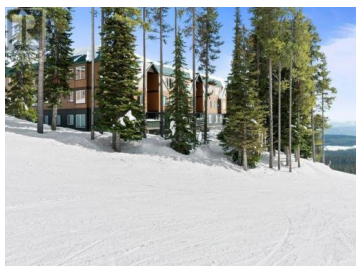




40 Kettle View Road 218 Big White British Columbia

Big White

\$569,500



Experience the ultimate convenience and comfort with this bright and spacious 4-bedroom, 3-bath condo at Plaza on The Ridge! Ski-in/ski-out access directly from the property, located right next to the Perfection Run, makes it an ideal destination for the whole family. With easy access to three of Big White's top chairlifts--Plaza, Ridge Rocket, and Snow Ghost--plus the village center just a short stroll away for shopping, dining, and events, everything you need is right at your doorstep. This well-maintained condo features a private hot tub and a large open-concept living area with plenty of windows, allowing you to check the weather before heading out on the slopes. The spacious living room includes a cozy fireplace, while the kitchen boasts a breakfast bar and full dining area perfect for hosting family and friends. The primary bedroom has its own 3-piece ensuite, and the additional bedrooms are generously sized, with two more full bathrooms to accommodate everyone comfortably. Whether you're seeking a family retreat or looking for a profitable investment property with no rental restrictions, this condo is the perfect place to call home. Don't miss your chance to own this exceptional property! (id:6769)

Jesse East

RE/MAX Kelowna

Phone: (250) 862-1234

<http://www.jesseeast.com/>



RE/MAX Kelowna
100-1553 Harvey Avenue
Kelowna, BC,
Canada

