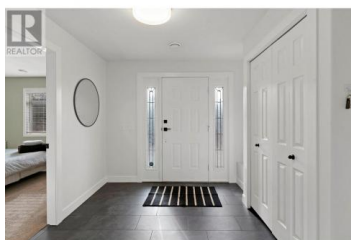




2196 Lilloet Crescent Kelowna British Columbia

Dilworth Mountain

\$955,000



Charming Family Home in Dilworth - Prime Location Close to Downtown Kelowna. Here's your chance to live in a fantastic neighbourhood, just minutes from downtown Kelowna! This beautiful Dilworth family home offers a spacious, open floor plan, recently updated with re-sanded & stained hardwood flooring, fresh tile entry on the main level, new paint throughout, new gas stove, microwave, & dryer and new light fixtures, some baseboards. 2 new toilets. This home features 3 bedrooms plus a den, 3 full bathrooms, and a separate family and media room in the lower level--perfect for relaxation and entertainment. The fully fenced and tiered backyard has freshly laid sod, offering a great space for outdoor activities. Other recent upgrades include a new roof & eavestroughs(2024), stucco painted and furnace & A/C approx. 2017. Extra parking spot half way up driveway allows for easy back up spot. Enjoy a generous-sized deck with some lake views, ideal for summer evenings and gatherings. With golf courses, shopping, and schools nearby, this home offers both convenience and comfort in a sought-after location. Affordable living on Dilworth Mountain--don't miss the opportunity to make this your new home! (id:6769)

Murray Neuman

Coldwell Banker Horizon Realty

Phone: (250) 862-1411

<http://www.murrayneuman.com/>



RE/MAX Kelowna
100-1553 Harvey Avenue
Kelowna, BC,
Canada

