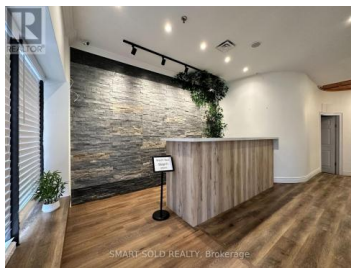
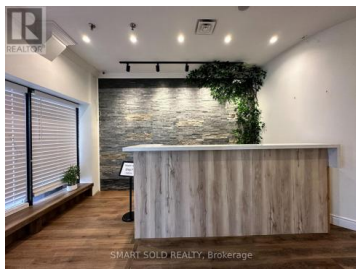
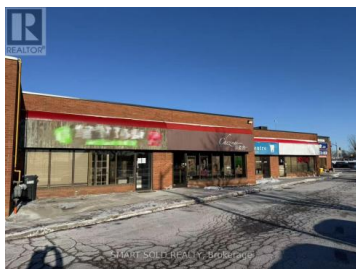




155 East Beaver Creek Road 22 Richmond Hill Beaver Creek Business Park Ontario

Beaver Creek Business Park

\$1,199,000



Prime Beaver Creek Location. Excellent Exposure With Direct Signage Offers High Visibility And Traffic. Approx. 1592 Sq Ft Unit Comes With A Total Of 6 Rooms (1 Living Room, 3 Rooms With Showers, 2 Rooms Without Showers) + A Small Kitchen, A Small Office At The Front, And Two Washrooms. Front And Rear Entrance From Building's Atrium. Ample Parking Space. It Can Be Used For Various Business Purposes, Healthcare And Wellness Services(Like Clinics, Massage), Beauty And Personal Care(Like Salons, Tattoo Or Piercing Studios), Education And Training(Like Coaching Institutes, Language Or Music Schools), Office-Based Business(Like Consulting Firms), Creative Studios(Like Photography, Art Or Craft Workshops), Retailers. Easy Access To Hwy 7, 404, 407, Surrounded By Restaurant, Hotel, Banks. Great Opportunity To Own This Commercial Multi-Use Unit. **** EXTRAS **** All Electrical Light Fixtures, Newer Roof Top Air Conditioning Unit (id:6769)

ALYSSA DOU

SMART SOLD REALTY

Phone: (647) 607-9999



RE/MAX Kelowna
100-1553 Harvey Avenue
Kelowna, BC,
Canada