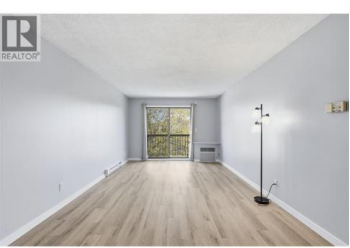




# 1595 Summit Drive 22 Kamloops British Columbia

Sahali

## \$263,999

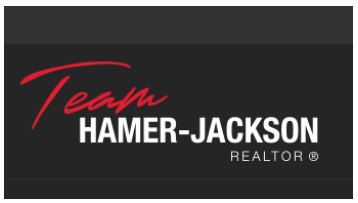


Located minutes from Thompson Rivers University and Royal Inland Hospital, with transit nearby and easy access to shopping, restaurants, and downtown--welcome to Sun Valley Court in Sahali. An excellent opportunity for first-time buyers, students or investors seeking value in a central location. Vacant and move-in ready, this 2-bedroom, 1-bathroom apartment offers a functional layout with a bright living room that opens to a private deck. A practical kitchen, separate dining area and versatile den add flexibility for easy living, a place to work from home and in suite storage. A smart, well-located move in today's market--reach out for details or to arrange a showing. (id:6769)

**Teresa Betts**

Stonehaus Realty Corp

Phone: (250) 258-0206



RE/MAX Kelowna  
100-1553 Harvey Avenue  
Kelowna, BC,  
Canada