



1900 Hugh Allan Drive 22 Kamloops British Columbia

Pineview Valley

\$569,900



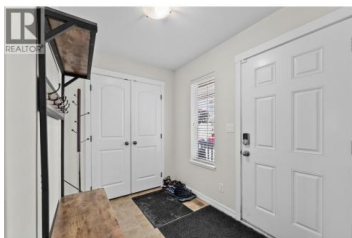
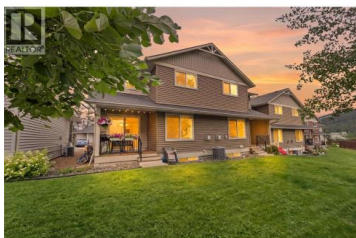
Don't miss this spacious 4-bedroom, 3.5-bath townhouse in the sought-after Pineview neighbourhood! This well-maintained home features an updated kitchen with quartz countertops, a functional layout, and a large additional wardrobe in the primary bedroom. Enjoy being close to playgrounds, parks, hiking and biking trails, and the new elementary school opening September 2026. Conveniently located just minutes from shopping, restaurants, and recreation, this home offers exceptional value in a growing family-friendly community. (id:6769)



Theresa Arksey

Oakwyn Realty Ltd

Phone: (250) 574-2803



RE/MAX Kelowna
100-1553 Harvey Avenue
Kelowna, BC,
Canada