



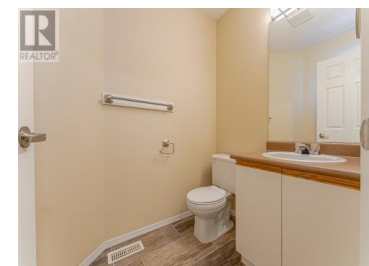
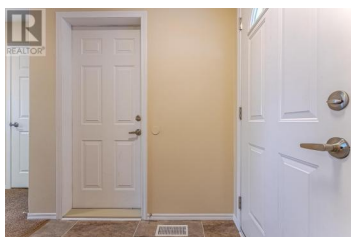
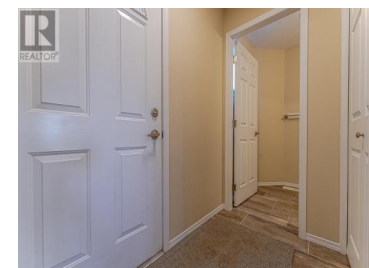
## 1920 HUGH ALLAN Drive 22 Kamloops British Columbia

Pineview Valley

**\$494,900**



Unit #22 at Pineview Heights, currently a tenanted property, is now available for sale, awaiting its next occupant or eager investor. This home, characterized by floorplan C, features a thoughtfully designed kitchen, strategically located to keep any culinary chaos confined while maintaining an open & sociable atmosphere with its pass-through design. 3 beds, 2 baths, & a full unfinished basement, this residence effortlessly checks multiple boxes in the search for a new home. Whether you're a first-time buyer or investing in a property for students attending TRU, this home offers versatile options. Nestled in the desirable Pineview Valley, there's much to enjoy; from scenic walking trails to hardcourt areas, and play facilities. This property is not just a dwelling; it's an opportunity to enjoy a lifestyle. Contact us to view this property and make it your own. \*Pictures used are from similar unit\* (id:6769)



### David Lawrence

Royal LePage Westwin Realty

Phone: (250) 374-1461

<https://www.kamloopsrealestateagent.com/>



RE/MAX Kelowna  
100-1553 Harvey Avenue  
Kelowna, BC,  
Canada