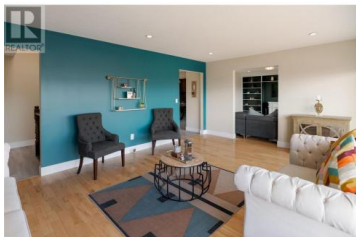




2218 Omineca Place Kelowna British Columbia

Dilworth Mountain

\$1,299,000



Perched in the highly desirable Dilworth Mountain community, this updated home delivers the ultimate blend of privacy, outdoor lifestyle, and sweeping views. Tucked against a lush greenbelt for added seclusion, and capturing stunning city and partial lake views from the front, this is a rare and special offering. Thoughtfully laid out for families, the upper level features three bedrooms and two bathrooms, including a spacious primary retreat complete with an ensuite. The second bathroom offers direct access to the pool deck—ideal for seamless indoor-outdoor living and summer entertaining. Downstairs, the lower level opens up even more possibilities with two additional bedrooms (both with in-floor heating), a large family room roughed-in for a wet bar or second kitchen, a full bathroom, and a den—perfect for multi-generational living, a guest suite, or future income potential. The outdoor space is equally impressive. A generous partially covered deck offers a front-row seat to the views, while the saltwater pool—set into the hillside with complete privacy—creates a resort-like experience at home. Extras include an oversized garage and abundant parking with space for an RV or boat. Located just minutes to all the essentials—shopping, restaurants, schools, transit, and trails—this home offers the perfect balance of peaceful living and urban convenience. A rare find in on...



RE/MAX Kelowna
100-1553 Harvey Avenue
Kelowna, BC,
Canada

Natonia Cartier

RE/MAX Kelowna - Stone Sisters

Phone: (250) 212-0790

