



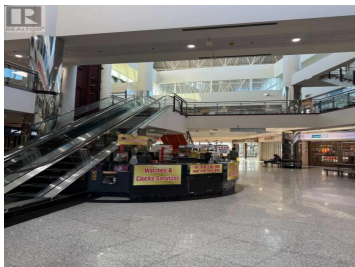
TIMES SQUARE

550 Hwy 7 221A Richmond Hill Beaver Creek Business Park Ontario

Beaver Creek Business Park

\$269,000

NU STREAM REALTY (TORONTO) INC., Brokerage



Location, Location, and Location. Prime retail unit in a fantastic established Times Square shopping plaza. Special unit with plumbing for many uses in potential, currently as a nail shop, suitable for mostly retail businesses, particularly requiring the use of water, like spa, clinic, hair salon, or massage. Well-maintained, bright unit with one treatment room and a pantry now. Step to the bank, medical clinics, and restaurants. Close to High vehicular and pedestrian traffic, Hwys 404 & 407. Moreover, Lots of parking spaces, including surface and underground. (id:6769)



RE/MAX Kelowna
100-1553 Harvey Avenue
Kelowna, BC,
Canada

JING YU LIU

NU STREAM REALTY (TORONTO) INC.

Phone: (647) 695-1188

