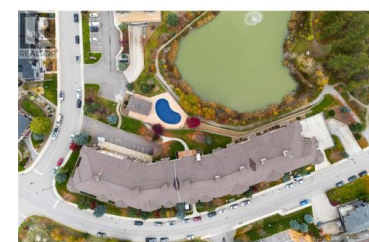




2551 Shoreline Drive 223 Lake Country British Columbia

Lake Country North West

\$439,000



Located in 'The Lakes' in Lake Country, Sitara on the Pond offers this preferred CORNER UNIT with lots of light & privacy. This larger 1,084 sq ft unit features two bedrooms, each with an en-suite--ideal for guests or STUDENT ROOMMATES & TWO BALCONIES with views of Pollard's Pond, it's a nature-focused space with walking trails & picnic benches. Inside, the home offers a welcoming entrance, dedicated dining area & a well-designed kitchen overlooking the living space. Enjoy outdoor living from either balcony, perfect for morning coffee or unwinding at the end of the day. Secured parking in a heated underground parkade adds year-round convenience. The property allows long-term rentals & is pet-friendly, permitting one dog (up to 14" at the shoulder or 20 lbs) or one cat. Amenities include a seasonal pool, hot tub, common area with pool table & a well-equipped gym. The location is ideal, with UBCO & Kelowna International Airport just 15 minutes away. The Okanagan Rail Trail is nearby for walking, running or cycling, while Kalamalka, Wood & Okanagan lakes offer endless ways to get on the water for paddle boarding or kayaking. Spion Kop trails are close by, the beach is minutes away. Turtle Bay Crossing at the start of the community covers essentials from a medical clinic, pharmacy, liquor store, retails stores & coffee, plus transit is nearby. Sitara on the Pond is well-locate...



RE/MAX Kelowna
 100-1553 Harvey Avenue
 Kelowna, BC,
 Canada

Paige Gregson

RE/MAX Vernon

Phone: (250) 308-2928

<http://www.paigegregson.com/>

