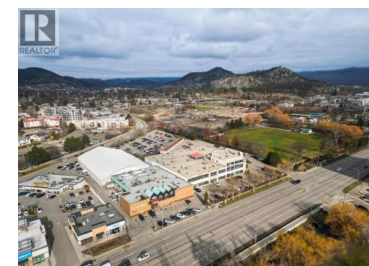


1634 Harvey Avenue 224A Kelowna British Columbia

Glenmore

\$18



Opportunity to lease a demised portion of a professionally built-out second-floor office at 1634 Harvey Avenue, offering approximately 3,050 sq. ft. in one of Kelowna's most established commercial corridors. The space is part of a larger office floorplate and benefits from existing improvements, including a combination of private offices, open work areas, access to boardroom facilities, and shared common areas with accessible washrooms. Both walk-up and elevator access are available, providing ease of access for staff and clients. The layout is efficient and well suited for professional, medical, or administrative users seeking turnkey space without the cost and time associated with a full build-out. Ample on-site parking is available for employees and visitors. The property offers excellent visibility and connectivity with access from both Harvey Avenue and Burch Road. The surrounding area is anchored by the Landmark Office Towers and is further strengthened by nearby amenities, including the Parkinson Recreation Centre currently under construction. (id:6769)

Christopher Wills

Venture Realty Corp.

Phone: (250) 870-1330

<https://venturecommercial.ca/>



RE/MAX Kelowna
100-1553 Harvey Avenue
Kelowna, BC,
Canada