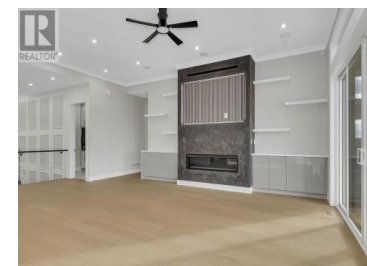
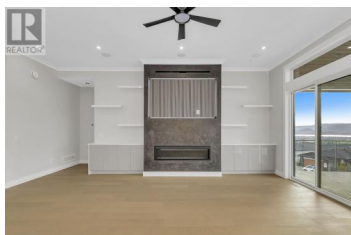




2250 Lavetta Drive Kelowna British Columbia

Black Mountain

\$1,749,000



Welcome to this stunning brand-new Kirschner Mountain home. Every inch of this masterpiece exudes quality craftsmanship and sophisticated design. The soaring ceilings, expansive windows and open-concept floor plan mean this 6-bedroom, 6-bath home offers an unparalleled living experience, combining comfort, elegance, and gorgeous Lake and City views. A chef's dream kitchen boasts high-end appliances, an abundance of custom cabinetry, and a large central island. There is also a butlers pantry with separate fridge, stove and sink. The spacious living and dining areas flow effortlessly outdoors, creating an inviting ambiance for both family and guests. The luxurious primary suite is a true retreat, complete with a spa-like ensuite bathroom featuring a soaking tub, a glass-enclosed steam shower, and dual vanities. Huge lower level with a family room, media room underneath the garage (could be a bachelor suite with separate entrance) and 2 more bedrooms. For added flexibility and income potential, the home includes a fully equipped 2 bedroom legal suite, perfect for extended family or as a rental opportunity. The home is also wired for a hot-tub and pool. This is not just a home--it's a lifestyle. Experience the perfect blend of modern luxury and timeless elegance. Don't miss your chance to own this exceptional one of a kind property! (id:6769)

Paul Neufeld

RE/MAX Kelowna

Phone: (250) 470-1044

<http://www.neufeldhomes.com/>



RE/MAX Kelowna
100-1553 Harvey Avenue
Kelowna, BC,
Canada

