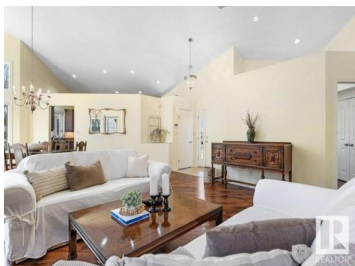
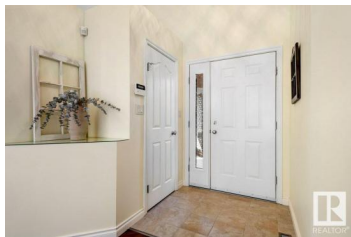




Rural Wetaskiwin County Alberta

None

\$749,900



The view? Open fields, endless sky, and nothing but quiet. This isn't just real estate it's Alberta history and for the first time in nearly 100 years, it's hitting the market. Beautifully maintained & barely lived in, this 1550 sqft bungalow offers 5 beds, den, 4 baths, a finished basement & a double attached garage -- both with in-floor heat. With minimal use over the past 21 years, everything from the well, septic, appliances, and mechanical systems is like new. No expense has been spared on upkeep or care. But the jewel of the property? The barn. Built in 1938 by the family's Swedish ancestors -- true craftsmen -- it's one of only three of its kind in Alberta. Recently protected with \$50,000 in metal cladding, this remarkable piece of history still stands tall with incredible potential to be something cool! One family since the 1930s -- the final piece of a three-generation legacy, and a rare chance to own something meaningful and carry its story forward. (id:6769)

Jolene M. Langle

RE/MAX Elite

Phone: (780) 910-1317

<http://www.jolenelangle.com/>



RE/MAX Kelowna
100-1553 Harvey Avenue
Kelowna, BC,
Canada